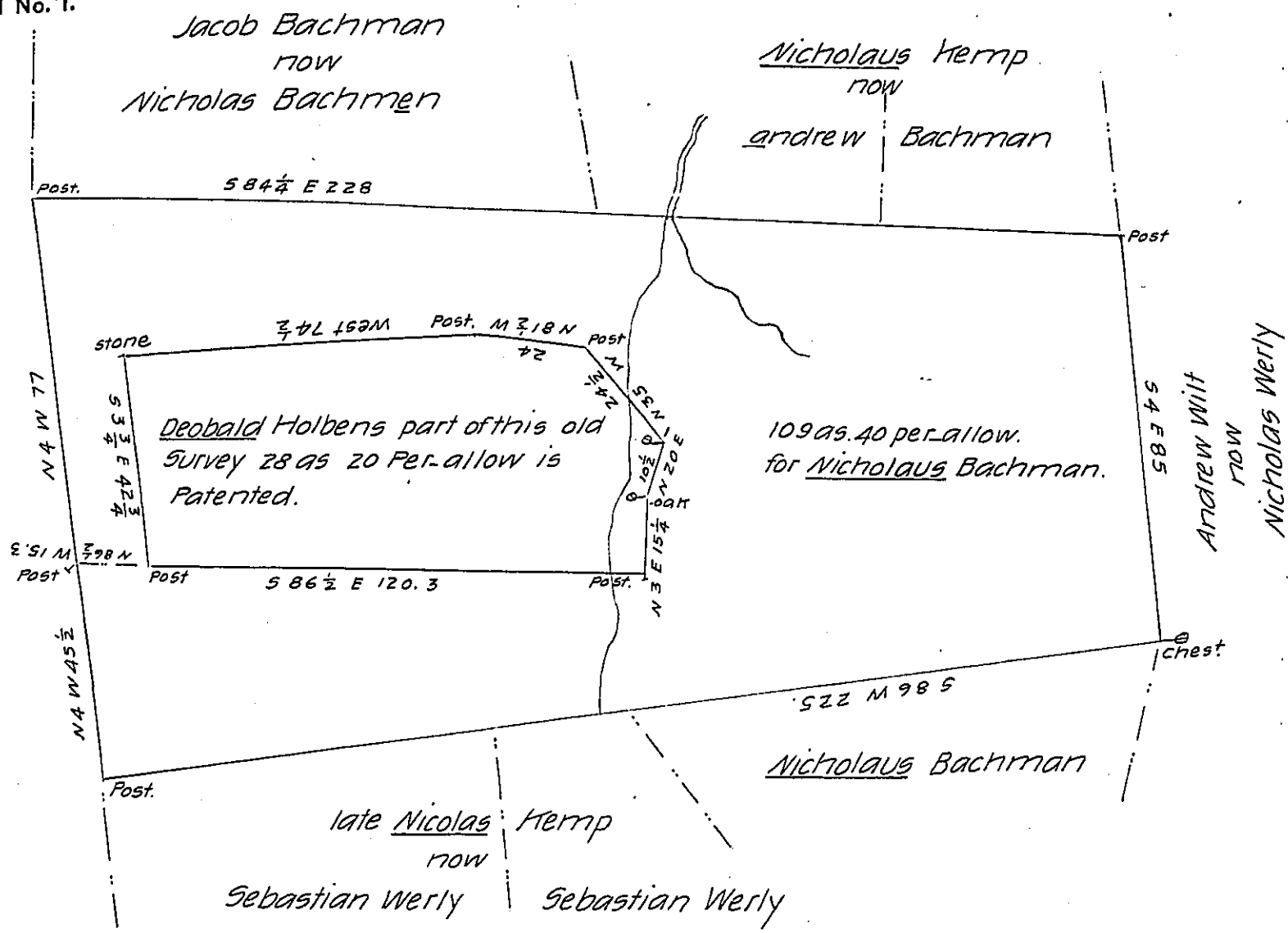


FORM No. 1.



A Draught of a Peice of land Situate in Weisenburg township Lehigh County, formerly Bucks, containing one hundred and Nine acres and Forty Perches and allowance of 6 P Ct & C9 a Part of one hundred and thirty-seven acres and Sixty Perches and allowance Originally Surveyed to Nicholaus Kemp By Warrant April 4th 1745 and the above now returned for Nicholaus Bachman. May 7th 1840.

Per John Sherer D.S.

Jacob Gallade Esqr S.G.

N.B. taken from a Draft of G. S. Eisenhard late D.S. he said the Small tract Marked out in the large Survey was Patented ^{to} Deobald Holben.

IN TESTIMONY that the above is a copy of the original remaining on file in the Department of Internal Affairs of Pennsylvania, made conformably to an Act of Assembly approved the 16th day of February, 1833, I have hereunto set my Hand and caused the Seal of said Department to be affixed at Harrisburg, this twenty-seventh day of July 1905.

Loac P. Brown
Secretary of Internal Affairs.